

E-Dust

Soiling sensor

Entec Solar

Measure your exact soiling losses and
optimize your cleaning campaigns



Main Features

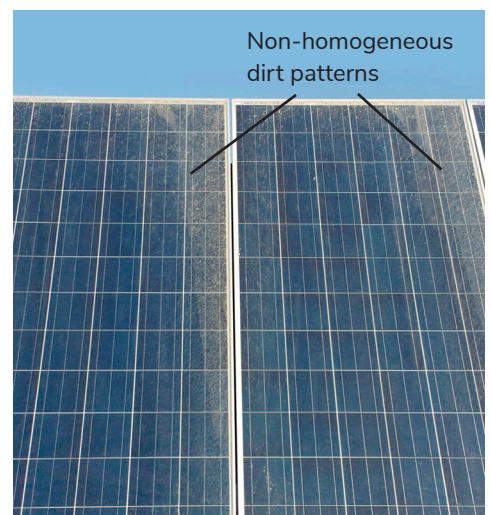
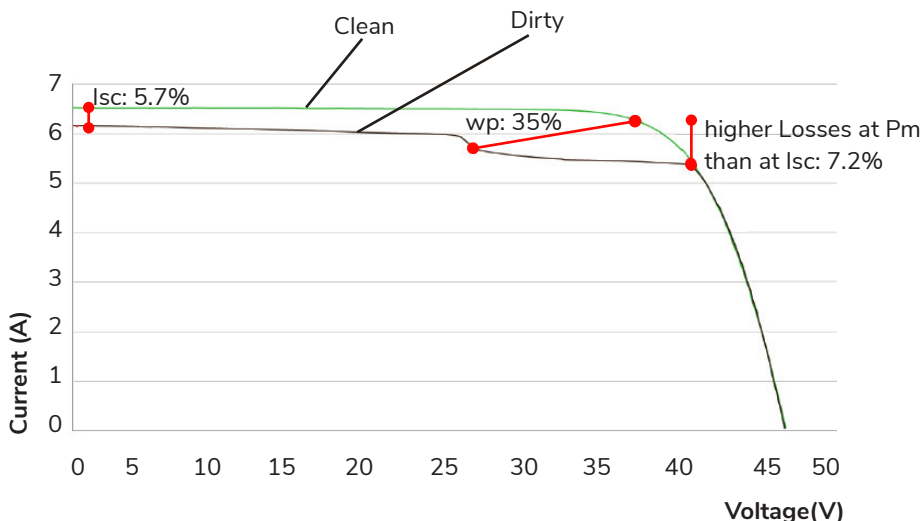
- Know your exact soiling losses by measuring the maximum power point and not just the short circuit current
- Up to one minute measuring sample period to obtain losses dependent on the incident angle
- Excellent accuracy on the MPP measurement
- Automatic calibration of the reference modules
- Automatic compensation of temperature differences between modules

Technical Specifications E-Dust

Specifications	Value
Maximum input ¹ voltage	160 V
Maximum input ² current	20 A
Maximum recommended voltage @STC	125V
Maximum recommended current @STC	12A
Number of inputs	2
Measurement uncertainty	±0.3% (V e I) / ±0.5% (P)
Measurement resolution	2.5mV/0.3mA
Measurement input	ModBus or Direct TCP/IP
Communication	ModBus or Direct TCP/IP
Communication ports	RJ45
IP protection	IP 51
Power input	
Voltage	12V/24V DC
Consumption	500mA @ 12V
Weight	1.0 kg
Dimensions	215 (244) x150x60,5mm (x-y-z)



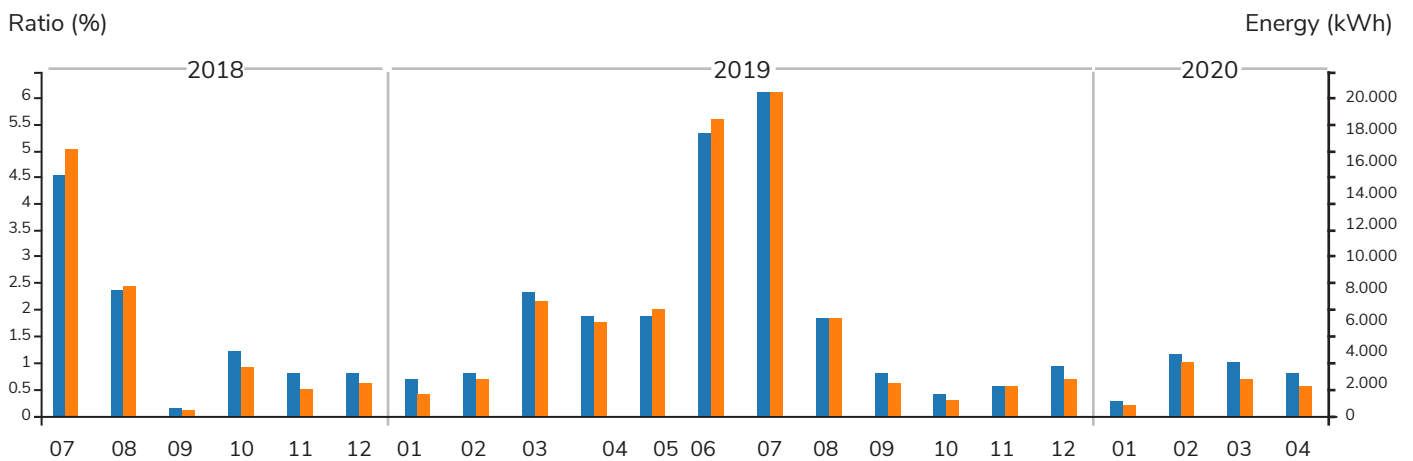
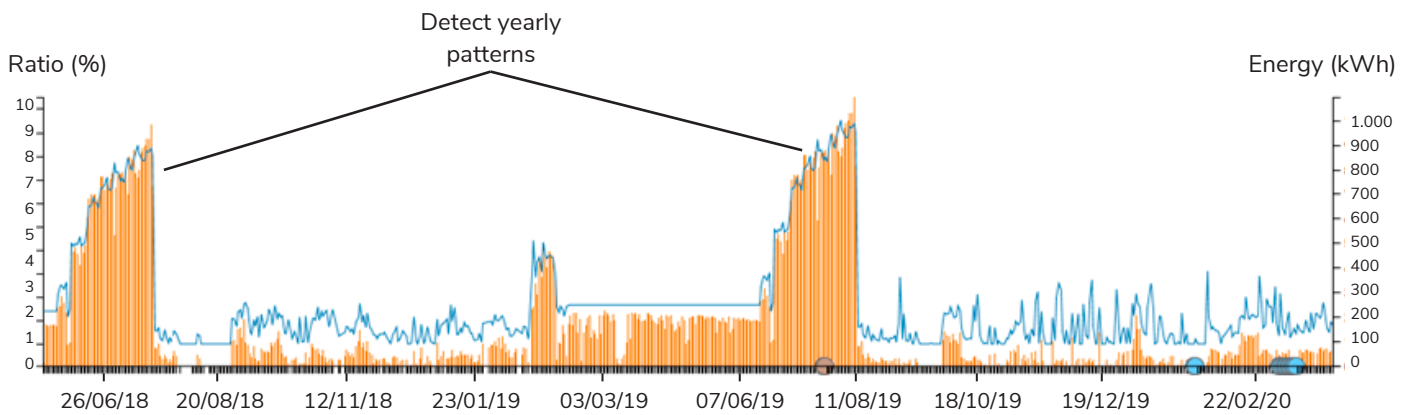
Clean and Dirty Modules' I-V Curves



Dust patterns corresponding to the I-V curve on the left

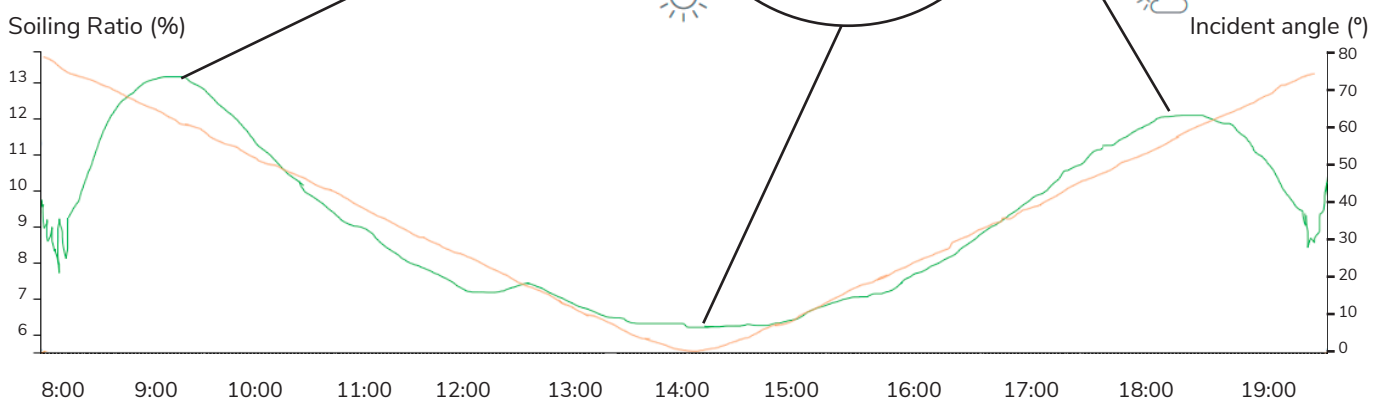
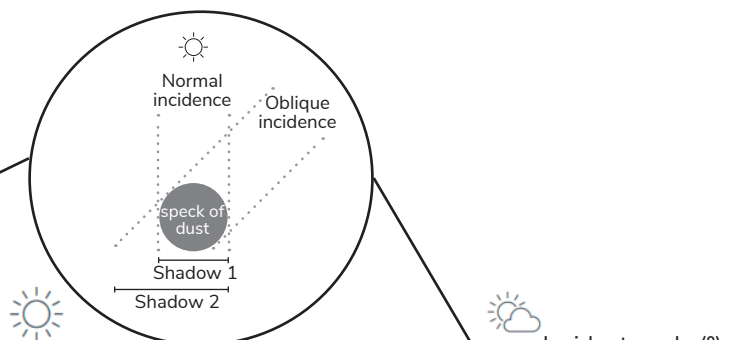
Main Features Pvet

- Optimize your cleaning campaigns by detecting soiling patterns with the PVET App.
- PVET analyzes the E-Dust measured data and returns your daily, monthly and yearly losses.



- Hourly losses are also measured and considered when calculating the real energy losses with respect to the PV plant power limitations.

- The incident angle has a great impact on the soiling loss and this is also considered in the E-Dust measurements.



ENTEC



SOLAR

“Innovative technological
developments for the photovoltaic
solar energy industry”

Contact: contact@entecsolar.es

www.entecsolar.es