



NAVIS

LONG RANGE WIRELESS ANEMOMETER & LOGGER - WL12X/WS



FEATURES

- easy-to-use solution for wind site evaluation
- stores more than one year wind history data
- easy installation without running cables
- shows and store all vital wind data
- range up to 1000 m with external antenna and extended range sensor)
- up to 1 year battery life
- battery or external powered
- built-in battery back-up real time clock
- large, night illuminated LCD display

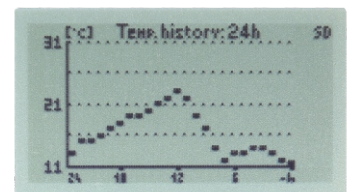
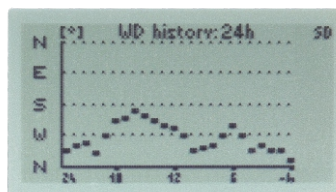
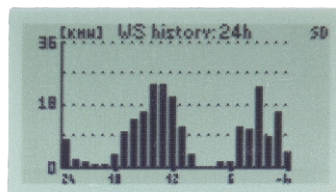
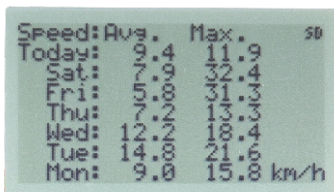
FUNCTIONS

- current wind speed
- temperature
- 24h wind speed and temperature history graphs
- 7 days history of maximum and average wind speed
- date and time
- wind speed alarm - acoustic and optical

Store to SD card

- average and maximum wind speed in selected interval
- average wind direction (with WSD sensor)
- temperature
- each data has date and time stamp

HISTORY DISPLAYS





NAVIS

COMPATIBLE SENSORS



WS 010-1 (standard range WS sensor)
WS 011-1 (extended range WS sensor)
WS 011-1-EX (Atex certifies WS sensor)



WSD 010-1 (standard range WSD sensor)
WSD 011-1 (extended range WSD sensor)
WSD 011-1-EX (Atex certifies WSD sensor)

ORDERING

Display unit

1 **WL12/D** display unit, long SMA antenna

Sets with sensors included

- 2 **WL12/WS** WL12/D with WS 010-1 sensor, short SMA antenna
- 3 **WL12X/WS** WL12/D with WS 011-1 sensor, long SMA antenna
- 4 **WL12/WSD** WL12/D with WSD 010-1 sensor, short SMA antenna
- 5 **WL12X/WSD** WL12/D with WSD 011-1 sensor, long SMA antenna



1



2



3



4



5

OPTIONS

Wind tunnel certificated version available

OPTIONAL ACCESSORIES

- 1 Long SMA antenna
- 2 Antenna with 3 m cable, magnetic mounting
- 3 YAGI antenna
- 4 Spare micro SD card
- 5 USB / micro SD adapter
- 6 External power adapter

MOUNTING ACCESSORIES

- 7 MDMA Magnetic display mounting assembly



1



2



3



4



5



6



7



NAVIS

TECHNICAL DATA

| | |
|------------------------------------------|------------------------------------------------------------------------------------------------------------------------------------------------------------------|
| Country of Origin : | Slovenia |
| Logging: | average and maximum wind speed, wind direction, temperature, RSSI |
| Logging interval: | selectable: 10 s, 1 min, 10 min, 60 min |
| Data recording: | minimum 12 months, .txt data format |
| Memory card: | micro SD (enclosed) |
| Wind speed measurement range: | 0,6...50 m/s |
| Wind direction measurement range: | 0°– 359°, adjustable offset +/- 180° |
| Temperature measurement range: | -30....+60 °C |
| Wind speed units: | m/s, km/h, knots, mph |
| Temperature units: | °C, °F |
| Wind speed resolution: | 0,1 m/s |
| Wind direction resolution: | 1° |
| Temperature resolution: | 1°C |
| Wind speed accuracy: | +/- 2,5 %, calibration possible in 0,5% steps |
| Wind direction accuracy: | +/- 2,5° |
| Temperature accuracy: | +/- 1°C |
| Communication frequency : | 868 MHZ 915 MHz (FCC models) |
| Data transmitting: | every 2 seconds |
| Antenna input: | 50 Ohm, SMA connector |
| Range: | - sets WL12/WS, WL12/WSD up to 300 m visible distance - sets WL12X/WS, WL12X/WSD up to 1000 m visible distance - with Yagi antenna up to 3 x nominal range |
| Battery: | 4 x 1,5 V AA battery (not enclosed) |
| Battery life: | up to 12 months (without display illumination) |
| Externall power supply: | 5 V DC |
| Externall power connector: | micro USB (adapter is not enclosed) |
| Wind speed alarm: | adjustable max. alarm (red light + sound signal, 83dB/10cm) |
| Casing: | ABS, 115 x 83 x 32 mm |
| Weight: | 150 g |

