

WIRELESS ANEMOMETER & LOGGER

WL12/WS



FEATURES

- easy-to-use solution for wind site evaluation
- stores more than one year wind history data
- easy installation without running cables
- shows and stores all vital wind data
- range up to 250 m (1000M with extended sensor)
- up to 1 year battery life
- battery or external powered
- built-in battery back-up real time clock - large, night illuminated LCD display

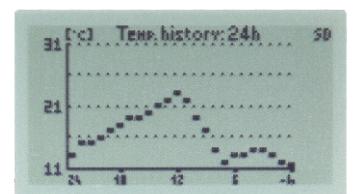
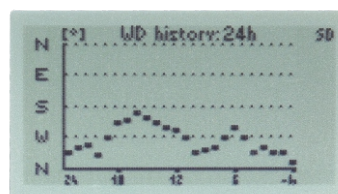
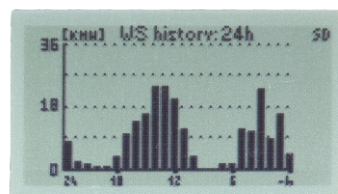
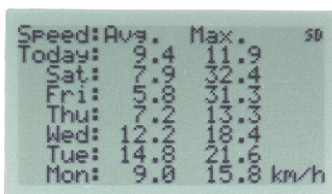
FUNCTIONS

- current wind speed
- temperature
- 24h wind speed, wind direction and temperature history graphs
- 7 days history of maximum and average wind speed
- date and time
- wind speed alarm - acoustic and optical

Store to SD card

- average and maximum wind speed in selected interval
- average wind direction (with WSD sensor)
- temperature
- each data has date and time stamp

HISTORY DISPLAYS





NAVIS

COMPATIBLE SENSORS



WS 010-1 (standard range WS sensor)
WS 011-1 (extended range WS sensor)
WS 011-1-EX (Atex certifies WS sensor)



WSD 010-1 (standard range WSD sensor)
WSD 011-1 (extended range WSD sensor)
WSD 011-1-EX (Atex certifies WSD sensor)

ORDERING

Display unit

1 **WL12/D** display unit, long SMA antenna

Sets with sensors included

- 2 **WL12/WS** WL12/D with WS 010-1 sensor, short SMA antenna
- 3 **WL12X/WS** WL12/D with WS 011-1 sensor, long SMA antenna
- 4 **WL12/WSD** WL12/D with WSD 010-1 sensor, short SMA antenna
- 5 **WL12X/WSD** WL12/D with WSD 011-1 sensor, long SMA antenna



1



2



3



4



5

OPTIONS

Wind tunnel certificated version available

OPTIONAL ACCESSORIES

- 1 Long SMA antenna
- 2 Antenna with 3 m cable, magnetic mounting
- 3 YAGI antenna
- 4 Spare micro SD card
- 5 USB / micro SD adapter
- 6 External power adapter

MOUNTING ACCESSORIES

- 7 MDMA Magnetic display mounting assembly



1



2



3



4



5



6



7



NAVIS

TECHNICAL DATA

Country of Origin

Slovenia

Logging:

average and maximum wind speed, wind direction, temperature, RSSI

Logging interval:

selectable: 10 s, 1 min, 10 min, 60 min

Data recording:

minimum 12 months, .txt data format

Memory card:

micro SD (enclosed)

Wind speed measurement range:

0,6...50 m/s

Wind direction measurement range:

0°– 359°, adjustable offset +/- 180°

Temperature measurement range:

-30....+60 °C

Wind speed units:

m/s, km/h, knots, mph

Temperature units:

°C, °F

Wind speed resolution:

0,1 m/s

Wind direction resolution:

1°

Temperature resolution:

1°C

Wind speed accuracy:

+/- 2,5 %, calibration possible in 0,5% steps

Wind direction accuracy:

+/- 2,5°

Temperature accuracy:

+/- 1°C

Communication frequency :

868 MHZ

915 MHz (FCC models)

Data transmitting:

every 2 seconds

Antenna input:

50 Ohm, SMA connector

Range:

- sets WL12/WS, WL12/WSD
- sets WL12X/WS, WL12X/WSD
- with Yagi antenna

up to 300 m visible distance

up to 1000 m visible distance

up to 3 x nominal range

Battery:

4 x 1,5 V AA battery (not enclosed)

Battery life:

up to 12 months (without display illumination)

Externall power supply:

5 V DC

Externall power connector:

micro USB (adapter is not enclosed)

Wind speed alarm:

adjustable max. alarm (red light + sound signal, 83dB/10cm)

Casing:

ABS, 115 x 83 x 32 mm

Weight:

150 g

