



NAVIS

# WIRELESS ANEMOMETER & LOGGER

## WL12/WSD



### FEATURES

- easy-to-use solution for wind site evaluation
- stores more than one year wind history data
- easy installation without running cables
- shows and store all vital wind data
- range up to 250 m (1000 m with external antenna and extended range sensor)
- up to 1 year battery life
- battery or external powered
- built-in battery back-up real time clock
- large, night illuminated LCD display

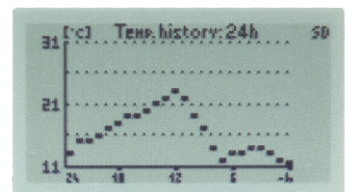
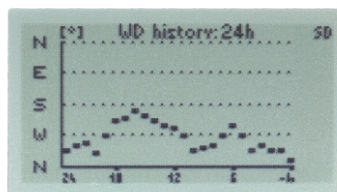
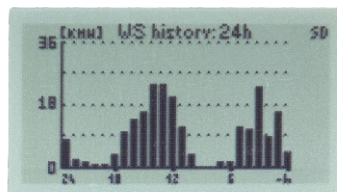
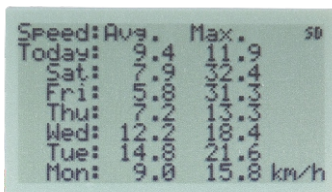
### FUNCTIONS

- current wind speed
- wind direction
- temperature
- 24h wind speed, wind direction and temperature history graphs
- 7 days history of maximum and average wind speed
- date and time
- wind speed alarm - acoustic and optical

### Store to SD card

- average and maximum wind speed in selected interval
- average wind direction (with WSD sensor)
- temperature
- each data has date and time stamp

### HISTORY DISPLAYS





NAVIS

### COMPATIBLE SENSORS



WS 010-1 (standard range WS sensor)  
WS 011-1 (extended range WS sensor)  
WS 011-1-EX (Atex certifies WS sensor)



WSD 010-1 (standard range WSD sensor)  
WSD 011-1 (extended range WSD sensor)  
WSD 011-1-EX (Atex certifies WSD sensor)

### ORDERING

#### Display unit

1 **WL12/D** display unit, long SMA antenna

#### Sets with sensors included

- 2 **WL12/WS** WL12/D with WS 010-1 sensor, short SMA antenna
- 3 **WL12X/WS** WL12/D with WS 011-1 sensor, long SMA antenna
- 4 **WL12/WSD** WL12/D with WSD 010-1 sensor, short SMA antenna
- 5 **WL12X/WSD** WL12/D with WSD 011-1 sensor, long SMA antenna



1



2



3



4



5

### OPTIONS

Wind tunnel certificated version available

### OPTIONAL ACCESSORIES

- 1 Long SMA antenna
- 2 Antenna with 3 m cable, magnetic mounting
- 3 YAGI antenna
- 4 Spare micro SD card
- 5 USB / micro SD adapter
- 6 External power adapter

### MOUNTING ACCESSORIES

- 7 MDMA Magnetic display mounting assembly



1



2



3



4



5



6



7



NAVIS

## TECHNICAL DATA

### Country of Origin

### Slovenia

<b>Logging:</b>	average and maximum wind speed, wind direction, temperature, RSSI
<b>Logging interval:</b>	selectable: 10 s, 1 min, 10 min, 60 min
<b>Data recording:</b>	minimum 12 months, .txt data format
<b>Memory card:</b>	micro SD (enclosed)
<b>Wind speed measurement range:</b>	0,6...50 m/s
<b>Wind direction measurement range:</b>	0°– 359°, adjustable offset +/- 180°
<b>Temperature measurement range:</b>	-30....+60 °C
<b>Wind speed units:</b>	m/s, km/h, knots, mph
<b>Temperature units:</b>	°C, °F
<b>Wind speed resolution:</b>	0,1 m/s
<b>Wind direction resolution:</b>	1°
<b>Temperature resolution:</b>	1°C
<b>Wind speed accuracy:</b>	+/- 2,5 %, calibration possible in 0,5% steps
<b>Wind direction accuracy:</b>	+/- 2,5°
<b>Temperature accuracy:</b>	+/- 1°C
<b>Communication frequency :</b>	868 MHZ 915 MHz (FCC models)
<b>Data transmitting:</b>	every 2 seconds
<b>Antenna input:</b>	50 Ohm, SMA connector
<b>Range:</b>	- sets WL12/WS, WL12/WSD up to 300 m visible distance - sets WL12X/WS, WL12X/WSD up to 1000 m visible distance - with Yagi antenna up to 3 x nominal range
<b>Battery:</b>	4 x 1,5 V AA battery (not enclosed)
<b>Battery life:</b>	up to 12 months (without display illumination)
<b>Externall power supply:</b>	5 V DC
<b>Externall power connector:</b>	micro USB (adapter is not enclosed)
<b>Wind speed alarm:</b>	adjustable max. alarm (red light + sound signal, 83dB/10cm)
<b>Casing:</b>	ABS, 115 x 83 x 32 mm
<b>Weight:</b>	150 g

